

Small Cutting machine

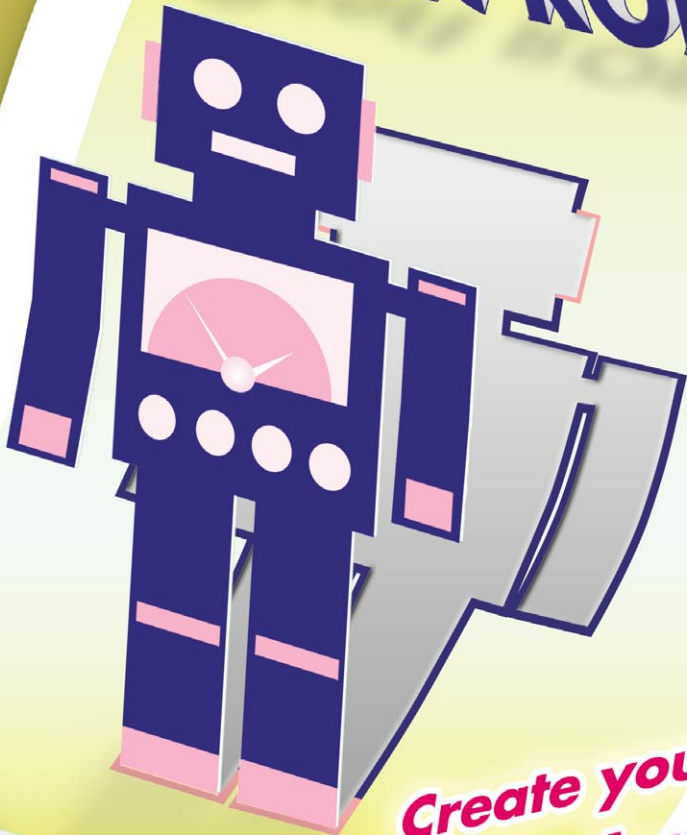
GRAPHTEC

Craft ROBO

Now you can add
a home cutter
to your home printer



Craft ROBO



Create your own original
cards, decals, labels, Scrapbooking,
and much, much more!

An Ideal Partner
for your Printer



Craft ROBO CC100-20



- ★ A4 size (Letter size for US model)
- ★ Cut-through function
- ★ Bundled software
- ★ Outline cut function
- ★ Trial kit

*You can cut both film and paper or card on the same machine.
Use the half-cut (kiss-cut) function to cut around stickers and decals on vinyl,
while leaving them attached to the carrier sheet.
Use the cut-through function to cut out designs on paper or card.*



Specifications

Shape	Grit-rolling
Drive method	Stepping motor
Cutting range	Maximum: 200 mm x 1000 mm (7.9 inch x 39.4 inch) (when extended) However, limited to film (media 0.1 mm (0.004 inch) or less in thickness, carrier sheet-included thickness of 0.3 mm (0.012 inch) or less)
Usable sheet width	A4 size supported (Letter size for US model) Loadable sheet width: maximum 260 mm (10.2 inch), minimum 210 mm (8.3 inch) *However, this limitation does not apply if the carrier sheet is used
Operating speed	10 to 100 mm/sec (10 speeds in 10-mm/sec steps) (0.4 inch to 3.9 inch/sec (0.4 inch speeds in 0.4 inch/sec steps)
Loadable number of pens	1 pc.
Types of pens	Dedicated Blade holder General-purpose ball-point pen (only when the ball-point pen holder is used)
Media types that can be cut	Film (except for highly luminous reflection sheets) Media 0.1 mm (0.004 inch) or less in thickness, carrier sheet-included thickness of 0.3 mm (0.012 inch) or less Kent paper (157 g/m2) Drawing paper, postcard * Not all types of media can be cut.
Interface	USB 1.1
Rated power supply	Dedicated adapter, +24 V DC (1.875 A)
Power consumption	25 W (10 W or less during standby)
Guaranteed operating environment	16°C to 32°C, 35 to 70% R.H. (No condensation allowed, however)
External dimensions (W×D×H) (mm)	Approx. 368 x 160 x 105 (14.5 inch x 6.3 inch x 3.9 inch) (not including protrusions)
Weight	Approx. 2.5 kg

Brand names and product names listed in this brochure are the trademarks or registered trademarks of their respective owners. Specifications are subject to change without notice.

GRAPHTEC CORPORATION

503-10 Shinano-cho, Totsuka-ku, Yokohama 244-8503, Japan
Tel : +81 (045) 825-6250 Fax : +81 (045) 825-6396
Email : info@graphteccorp.com



Website [http:// www.graphteccorp.com](http://www.graphteccorp.com)